

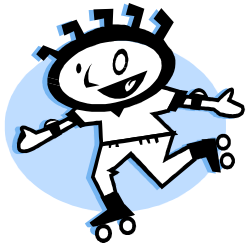
Bayview Park & Beach

Bayview Park is at the east end of town, across from Pamida.

It includes a life guarded swimming beach with a diving board, pavilion and a playground with restrooms.

Central Railyard Park

Central Railyard Park, **Ashland's newest park**, is located in the Heart of Ashland behind the Depot, the Civic Center and the Bretting Community Center. This park has a playground, skatepark, tennis courts and baseball fields.



Kreher Park & Beach

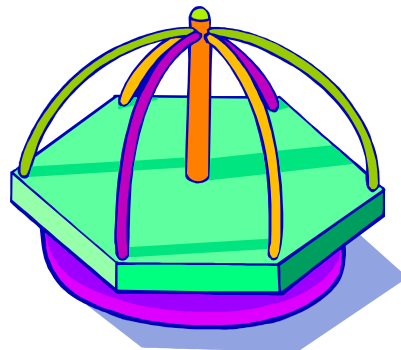
Kreher Park is located at the foot of Prentice Ave, on the lakeshore near the Ashland Marina.

It features: boat landing, playground, swimming beach with life guards, fishing pier, showers & restrooms with flush toilets, pavilion with picnic tables, and electricity.



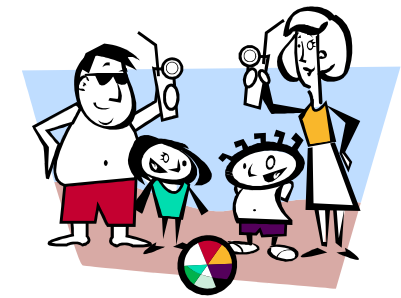
Maslowski Park & Beach

Maslowski Park is located at the western city limits, on the lakefront, as you travel along Hwy 2. This park includes a beautiful swimming beach (with no life guards), a playground, volleyball net, restrooms, pavilion and an artesian well.



Prentice Park is Ashland's Largest Park with 100 acres

Prentice Park is located at the western city limits. Turn south on Turner Road, off Hwy 2. It Features: restrooms with flushing toilets, walking trail, artesian well, playground, two pavilions with picnic tables and electricity.

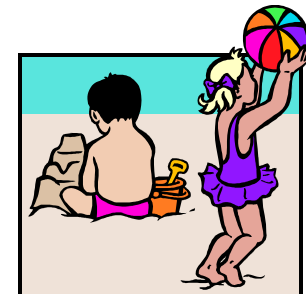


Washburn Also has some
great beaches

West End Park

&

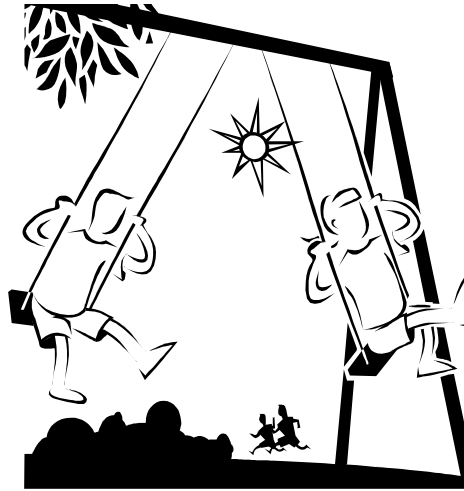
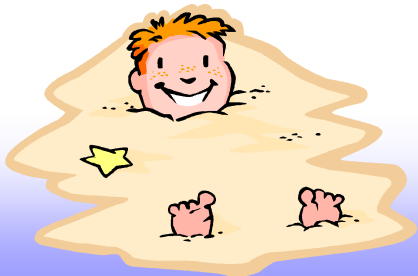
Friendly Valley Way



**Ashland has a variety of
Parks & beaches for our
visitors enjoyment.**

**Many of our parks contain;
new play playgrounds,
some swimming beaches,
restrooms and a skatepark.**

**Many of the parks have
pavilions and they can be
reserved by calling
Ashland Public Works
at 715-682-7061**



This brochure is brought to you by,
Ashland Area Chamber of Commerce
805 Lake Shore Drive
Ashland, WI 54806

682-2500
800-284-9404
ashchamb@centurytel.net

Ashland City Parks & Beaches

Fun for the whole family!